

# Violence Escalation Continuum and Worker Responses to Violent Behaviour in Hospital and Long-Term Care Settings

## Purpose of this Tool

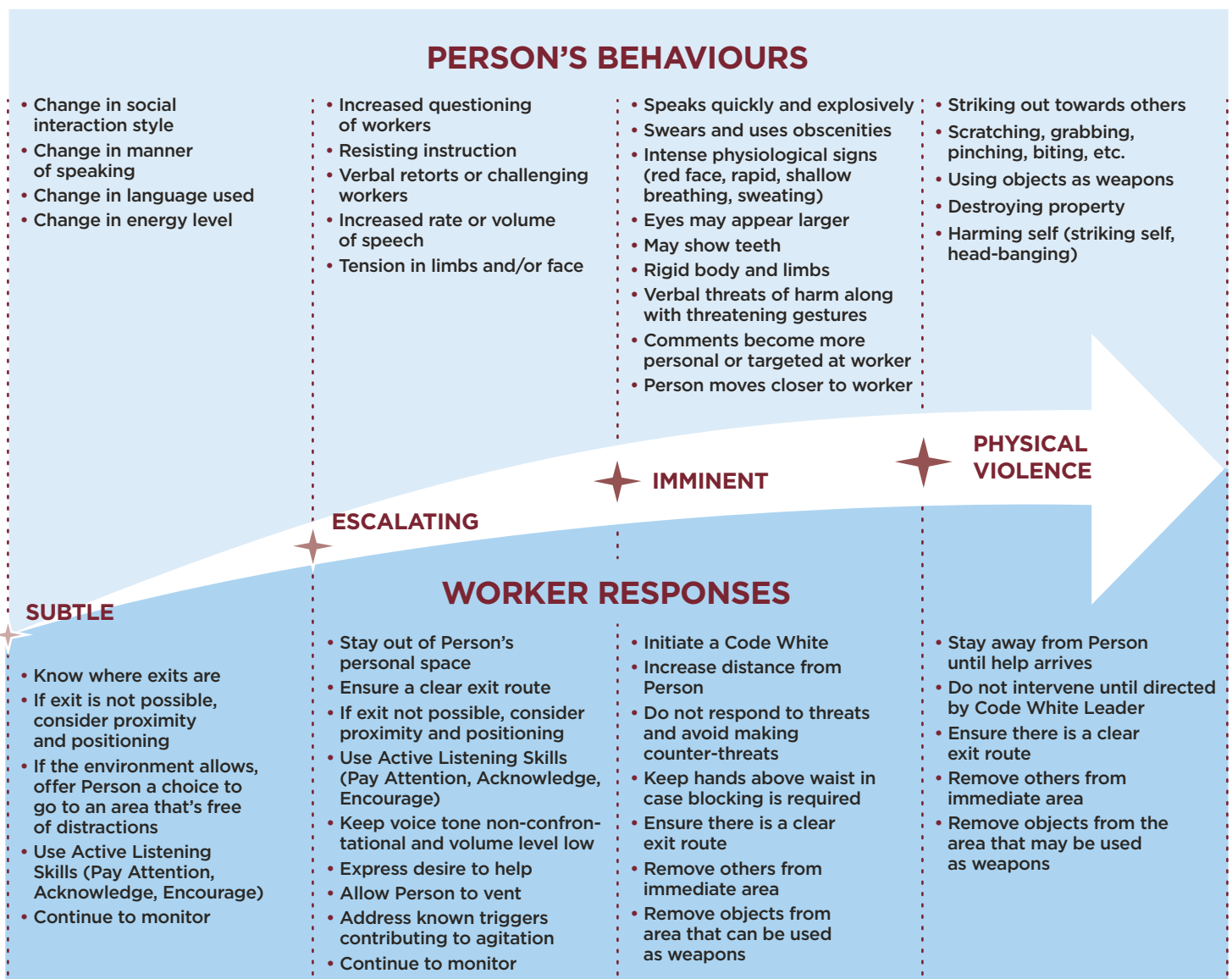
The purpose of this tool is to provide a diagram of escalating behaviour from **subtle** to **physical violence**, common behaviours for each phase, and worker responses for their safety and the safety of others.

## Who Uses this Tool

Hospital and long-term care workers who may encounter care recipients who pose a risk of violence.

## How to Use this Tool

This tool can be used in several ways such as posted in nursing stations, break rooms, Joint Health and Safety Committee/Health and Safety Representative notice board, or other visible areas to workers; as part of worker training; or as a hardcopy available distributed to workers.



# Violence Escalation Continuum and Worker Responses to Violent Behaviour in Home and Community Care Settings

## Purpose of this Tool

The purpose of this tool is to provide a diagram of escalating behaviour from **subtle** to **physical violence**, common behaviours for each phase, and worker responses for their safety and the safety of others.

## Who Uses this Tool

Home and community care workers who may encounter care recipients who pose a risk of violence.

## How to Use this Tool

This tool can be distributed to workers as a hardcopy or electronically.

